

Research task

Detection of the effects on human blood at mobile telephoning with the use of a Wave Ex Handychip. (Observation in a dark field).

The Wave Ex Handychip, manufactured by the company Vital Energy KG, has been tested by a microscope method in our compact laboratory for basic research.

Customer: Vital Energy KG, Rieschstr. 6, D-83646 Bad Tölz

Prepared by: Bernd Bruns

Pages: 41

Bernd Bruns *Institute for Natural Medicine Wiesbaden*
Rudolf-Vogtstraße 11
65187 Wiesbaden
Tel. 0611-843101; Fax 0611-9812720
www.alternative-energie.com
alternative-energie@gmx.de

Contents

General observation	Page 03
Observation method in a dark field with vital blood	Page 03
Methodical forms of interpretation	Page 04
Important conditions for the statement	Page 06
Safe method with a lot of side aspects	Page 06
We live dangerously: We will all get sick from radio waves	Page 07
Persistence time of mobile communication radiation in our body	Page 07
All mobile telephones radiate radiation	Page 08
Different manufacturers – different makes	Page 09
The age of a man is not decisive	Page 09
There is almost no disturbing factor in blood which would not change at radiation	Page 09
Analytic results and evaluations	Page 09
Evaluation and assessment: Mobile communication in a dark field	Page 10
General assessment	Page 18
Distinguishing signs and interpretation at observation of blood in a dark field	Page 23
Forms of signs in blood which have changed at telephoning with a mobile phone	Page 32
Final assessment	Page 38
Critics on disturbing effects of mobile communication and magnetic field	Page 39
The Wave Ex Handychip harmonizes ill-effecting radiation at mobile telephoning	Page 41

Proving of negative effects of mobile communication radiation on our vital blood and pathological changes in general human organism related to it.

General observation:

A lot of experiments in our compact laboratory for a basic research have proven that flat assessment of observation of blood in a dark field at a large number of people is impossible.

Therefore we really wanted to prove that radio waves initiate partial irritations in our body which lead (may lead) to large organic damage of our health.

Our human organism is so complicated that other symptoms which must be newly interpreted still occur and only thanks to a lot of examinations their similarity with some parameters may be assessed.

Each organ of our body performs a function which is vitally important. Only cooperation with many other organs guarantees that we will feel healthy and we will also be healthy. If a defect occurs at it (an infect from the medical aspect) and such an organ suffers from it or gets infected or even fails, health disorders with unforeseeable consequences may occur.

Also radio radiation e.g. from a microwave oven, mobile telephones, wireless telephones (DECT), W-LAN, which show a different oscillation from our cells (pulse and non-pulse waves), is able to give rise to diseases (e.g. tumours) which doctors are able to treat only very hard or not at all.

Observation method in a dark field with vital blood:

Examination of blood in a dark field is based on the knowledge of Prof. D. Günther Enderlein and Dr. Wilhelm von Brehmer who published new pioneer results of the research in about 1930.

The results which they achieved were unique for that period and at the beginning they should have served to treat cancer.

A lot of doctors and healers have contributed to utilisation and deepening of those results so far.

Thanks to a permanent development at people with a creative spirit a bigger fund of experience can be used today at a complex assessment of diseases. Only 1 little drop of blood is enough to interpret actions in the whole human organism. Our blood consists of fixed elements (blood cells) and seemingly liquid elements (plasma/serum). However, diversity of our blood is really apparent only when examined in a dark field. Health problems may be found here too. Such ill symptoms are given rise, inter alia, by dangerous parasites such as bacteria, funguses, c-candid, leeches and worms. Then metabolism problems (i.a. over-acidity), lack of minerals, heavy metals poisoning (e.g. by amalgam/mercury and chromium), boreliosys symptoms and failures of congestion can be proven. However, blood counts revealed this way always depend on a current condition of the examined person.

We thank to Christoher Gerner and his diploma thesis (Vienna University 1997) as well as to Ekkerhard Sirian Scheller for further knowledge since they looked through a microscope diligently and they established basis for new therapies.

Methodical forms of interpretation: (Methodology)

To be able to perform a thorough research the patient should fast for no less than 12 hours to guarantee that all proteins taken from food and liquids are not present in the body anymore. Not to cause distortion of the determining count the examined person should drink a smaller amount of water with low contents of minerals, whereas at any case he must not omit medicines. Although for some examined people long fasting for minimum 12 hours may be hard, this measure cannot be broken.

To obtain the submitted results of tests a patient must have fasted even for 16 hours sometimes. Only that way it was possible to obtain exact results.

Therefore we thank to all examined people who were available for our task for managing of such a long “wandering without water“. Without their willingness and engagement we would not be able to do such a large research study.

Methodical forms of interpretation: (changes of procedures)

The patient has not fasted

In the number of changes in procedures the fact to change only 1 parameter must have been observed.

The following features were examined:

1. a phone call with a Wave Ex chip and without a Wave Ex chip
2. a phone call without a Wave Ex chip and with a Wave Ex chip
3. person's age
4. mobile telephone: old or new generation (different models)
5. the same mobile phone with different people
6. the same mobile phone with the same person
7. duration

always in comparison with the reference count made before.

Methodical forms of interpretation: (changes of procedures)

The patient has fasted

In the number of changes in procedures the fact to change only 1 parameter must have been observed.

The following features were examined:

1. a phone call with a Wave Ex chip and without a Wave Ex chip
2. a phone call without a Wave Ex chip and with a Wave Ex chip
3. person's age
4. mobile telephone: old or new generation (different models)
5. the same mobile phone with different people
6. the same mobile phone with the same person
7. duration

always in comparison with the reference count made before.

Important conditions for the statement

We had to state repeatedly that it is misleading to apply the observation in a dark field at the people who have not fasted. Different proteins received in food simulate a disease in blood (see the table) and thus they can lead to the incorrect diagnostics. Therefore it should be strictly observed to follow the method only having fasted. However, a lot of therapists do not respect this important condition which is regrettable.

In a lot of publications on mobile communication radiation the principle of fasted testing is not pointed out. Although there is a tested person who, despite his previous consuming, shows relatively good blood by chance, such a state should be really only exceptional. In later assessment we will set our opinion to the fact why we doubt such values and statements.

Of course in absolute majority of cases a person does not call with a mobile phone in a state having fasted, however, at the method of a dark field pure observation is possible only if the patient is after having fasted.

Safe method with a lot of side aspects

In order to achieve a high degree of safety as many pathogenic forms of proteins in blood should be assessed as possible. Both the fixed blood cells and the liquid serum showed different anomalies which we have all recorded.

Some symptoms and components of blood were proven at it (regardless the fact whether weak or strong radiation is concerned) which could not have been affected by mobile communication radiation regarding to the form, amount and size.

Other blood parameters changed their form, reduced or increased their number, which indicates an adverse effect on a good assessment.

We live dangerously: We will all get sick from radio waves

We can hear this bad news in any media. What should we think about it? When we ask manufacturers/operators of the “devices radiating radiation“, we can always hear a lapidary reply that it is all only false propaganda to make inhabitants unsure. Whereas, they say, it has not been proven at health that it should be like that.

Unfortunately, the contrary is true.

There is a report according to which the radio posts operators disconnected the radio posts during the radiation testing by neutral testing authorities. This individual disconnection of particular radio posts and antennas is really possible and it was probably performed according to the operator´s need also more often.

If they are then tested regarding to harmful frequencies, it is not possible to find out any radiation loading.

We have succeeded to prove in a quality and demonstrative way so far that we are able to find out the changes in our body which may lead to later damage of health.

Time of duration of mobile communication radiation in our body:

Proving of this phenomenon showed to be extremely hard.

The examined person available to us was not able to remain fasting until having completed all the experiments.

Therefore the following experiment was made always with the same person:

A reference count was made at first.

12 hours fasting, taking of 1 blood drop and immediate assessment. Then a phone call was made at the people

a) with the Wave Ex chip

b) without the Wave Ex chip

These (count) values were recorded and evaluated.

The next morning the patients a) and patients b) were available again having fasted for the next blood taking.

**Such count values in a microscope were transferred to a PC and evaluated.
The process followed the steps above every day for 1 week.
Then comparison and calculation followed.
The results which we obtained were very different.**

Regardless the fact whether the examined people were after having fasted or not, no significant remains of anomalies in their blood were proven.

At some examined people we could prove mobile communication radiation already after 1 day in special areas of examination of blood on a microscope slide, - in case of other test parameters (deformations and changes) regression took by 1 week.

These features prove that every man deals with mobile communication radiation differently and each of his organs tries to deal with radiation whereas the adequate physical and psychological loading may have a big role.

However, at any case we cannot doubt that at all tested people temporary changes in blood were proven when handling with mobile devices which would cause no or only a little deviation from the standard at superficial blood testing. However, if we focus on particular symptoms, we can find out easily that the reference statements have changed negatively.

All mobile devices radiate radiation

At the beginning almost every examined person used a different mobile device. The fact that the “new generation” devices recommended by mobile devices manufacturers admit lower levels of radiation may be true, however, it has not proven at our blood examination.

Different manufacturers – different makes

Regardless the fact what mobile phone was concerned – after a phone call we could not state any improvement of examined blood.

As we have already stated: Every person (as an individual) reacts to mobile communication radiation differently.

The age of a man is not decisive

We tested the people in the age from 30 to 85 years and we had to state again that loads by mobile communication (changes in blood) were completely different.

This is the graphic selection of people in the age approx. 45 – 75:

It was proven clearly that, particularly at people tested after having fasted, who made a phone call with Wave Ex chip for 10 minutes, the change of blood components was proven very differently.

There is almost no disturbing factor in blood which would not change at radiation:

We had to state again at our researches that almost all our tested people reacted differently.

We proved almost all of many symptomatic defects which occur in our blood environment, whereas the time of duration of such “unpleasant companions” varied.

Analytic results and evaluations

At 62 tested people we always examined 20 features of blood which are called disturbing forms of proteins in our blood in a state not having fasted.

These should not be visible in a state not having fasted, since they show health dispositions in our body.

Evaluation and assessment: Mobile communication in a dark field

To compare with the state without telephoning from a mobile phone:

Not having fasted

Without the Wave Ex chip
ERYTHROCYTES:

Sedimentation, yes x x x
Sedimentation, no x

Echinocytes yes x
Echinocytes no + + +

Lemon shape yes + + + x
Lemon shape no

Bear paw shape yes +
Bear paw shape no + + + +

C-trichromona shape yes + +
C-trichromona shape no +

Inclusions yes
Inclusions no + + +

Half-shapes yes
Half-shapes no + + +

Live energy yes +
Live energy no + +

LEUKOCYTES:

Too big / too small yes
Too big / too small no x x +

Active yes + + +
Active no

Leukocyte trombes yes
Leukocyte trombes no + + +

--- amount yes + + +
--- amount no

SERUM / PLASMA:

c-candid yes x +
c-candid no +

Fibres, cobwebs yes x
Fibres, cobwebs no + +

Big firm protein forms yes + + +
Big firm protein forms no

Milky way yes +
Milky way no + +

Fibrillation corpuscles yes + + +
Fibrillation corpuscles no

Trombocytes yes
Trombocytes no + + +

Germs yes
Germs no + + +

End nucleuses yes
End nucleuses no + + +

Evaluation and assessment: Mobile communication in a dark field

To compare with the state without telephoning from a mobile phone:

Having fasted

Without the Wave Ex chip
ERYTHROCYTES:

Sedimentation, yes + x x x x x x + x x + + x (+) + x + + + x + + x x + +
Sedimentation, no

Echinocytes yes+ (+)
Echinocytes no k, + + + + + + + + + + + + + + + + + + k + + + +

Lemon shape yes k k k + + + k + + + + x + + x + k + + + + + + x
Lemon shape no +

Bear paw shape yes + + + + x + + x x k x x + + + x
Bear paw shape no k k k + + + k + + + +

C-trichromona shape yes + + + + + + + + + + + + + + x + k k x + x + x
C-trichromona shape no +

Inclusions yes x
Inclusions no +

Half-shapes yes +
Half-shapes no + + + + + + + + + + + + + + + + + + k + + + + + + + (x)

Live energy yes + + +
Live energy no + + + + x x + + + + + + + + + + + + + + + + + +

LEUKOCYTES:

Too big / too small yes x x x + +
Too big / too small no +

Active yes +
Active no

Leukocyte trombes yes
Leukocyte trombes no +

---Amount yes +
---Amount no

SERUM / PLASMA:

c-candid yes + + + x + x + + + + + + + + + k + + + + + +
c-candid no

Fibres, cobwebs yes + + x + + (+) + + + (+) +
Fibres, cobwebs no + + + + + k + + + + +

Big firm protein forms yes x x x x + + + x + + + + + + + + + +
Big firm protein forms no + + + + + + +

Milky way yes + + + + + + x x x x x + x + + + +
Milky way no + + + + + + +

Fibrillation corpuscles yes + + + + + + x x + + + + + + x + + + +
Fibrillation corpuscles no + +

Trombocytes yes
Trombocytes no +

Germs yes + + + x
Germs no +

End nucleuses yes +
End nucleuses no +

Evaluation and assessment: Mobile communication in a dark field

To compare with the state without telephoning from a mobile phone:

Not having fasted

**With the Wave Ex chip
ERYTHROCYTES:**

Sedimentation, yes x + x x
Sedimentation, no

Echinocytes yes +
Echinocytes no + + +

Lemon shape yes + + +
Lemon shape no +

Bear paw shape yes + +
Bear paw shape no + +

C-trichromona shape yes + + +
C-trichromona shape no +

Inclusion yes +
Inclusion no + + + +

Half-shapes yes
Half-shapes no + + + + +

Live energy yes +
Live energy no + + +

LEUKOCYTES:

Too big / too small yes
Too big / too small no y, y, y, +

Active yes +, +, +
Active no

Leukocyte trombes yes
Leukocyte trombes no + + + +

---Amount yes + + +
---Amount no

SERUM / PLASMA:

c-candid yes + + + +

c-candid no

Fibres, cobweb yes x +

Fibres, cobweb no + +

Big firm protein forms yes + + + +

Big firm protein forms no

Milky way yes

Milky way no + + + +

Fibrillation corpuscles yes x x x x

Fibrillation corpuscles no

Trombocytes yes

Trombocytes no + + + +

Germs yes +

Germs no + + + +

End nucleuses yes

End nucleuses no + + + +

Explanation of the symbols:

(+) = better

+ = the same

k = none

x = deterioration

y = extremely good

Total assessment:

With the Wave Ex chip
(some evaluations)

Having fasted,

Age 73 71 46 69 65 57 47 66 60 58 47 49 49

Very good

I

*

I

*

*

I

*

I

*

I

*

I

*

I

*

*

*

*

*

*

I_{neutral}

I

I

I

I

I

I

I

I

I

very bad

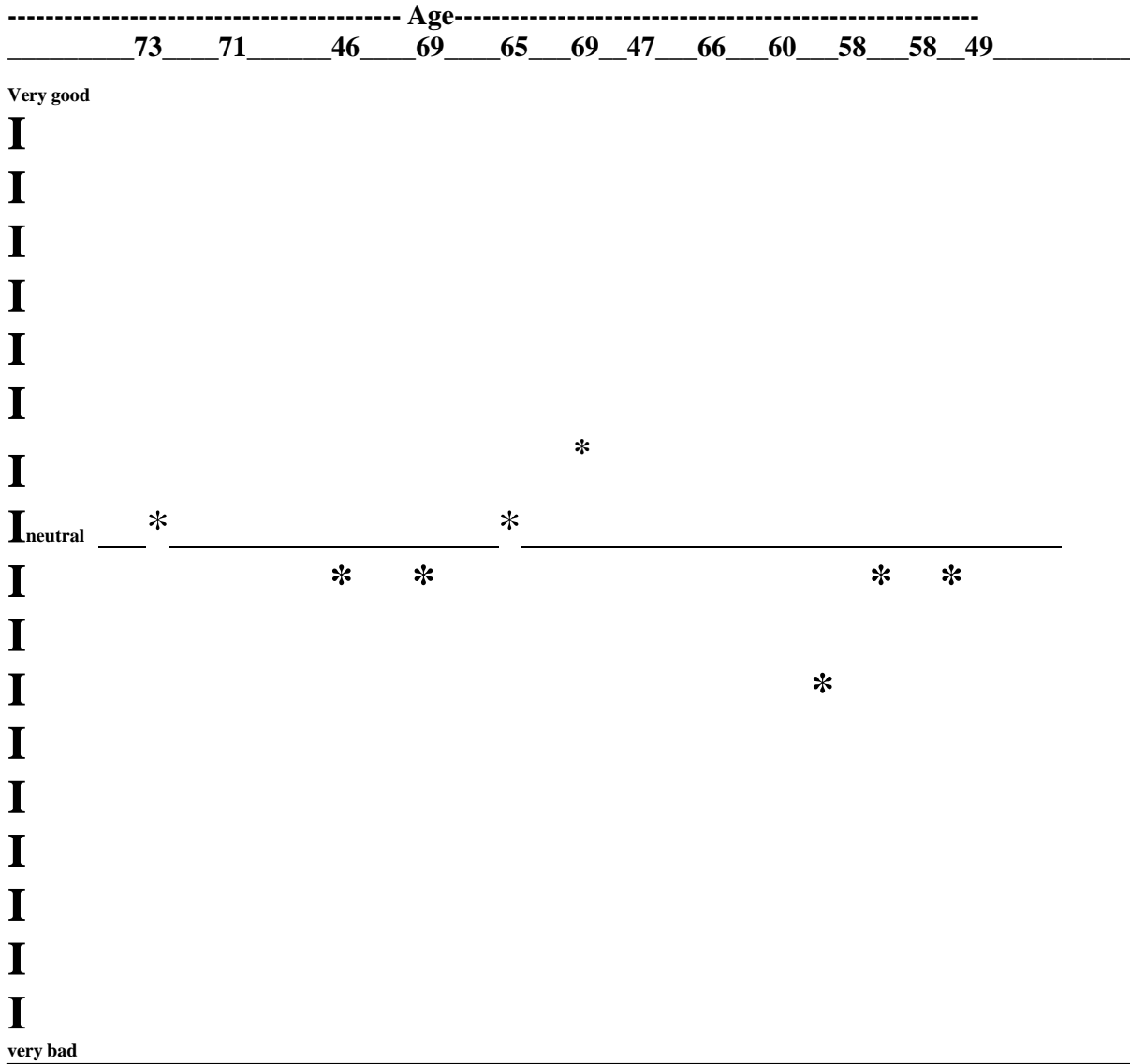
* = blood features will improve

Without a significant statement of different age groups

Total assessment:

With the Wave Ex chip
(some evaluations)

Not having fasted,

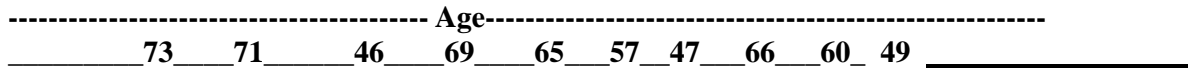


Chaotic values of different age groups

Total assessment:

With the Wave Ex chip
(some evaluations)

Not having fasted



Very good



neutral



very bad

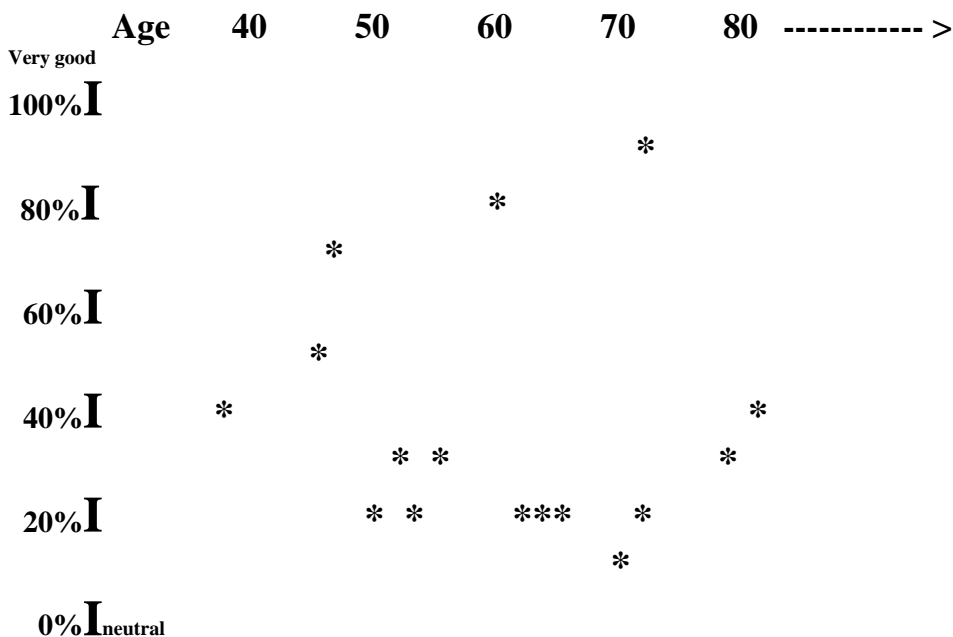
Chaotic values of different age groups

We state again that the accurate assessment is possible only in the state of having fasted. (methodical condition)

However, the conditions at telephoning from a mobile telephone are completely different in practise and they cannot be compared with the stated research.

Dependency of mobile communication radiation and man's age:

(some evaluations)



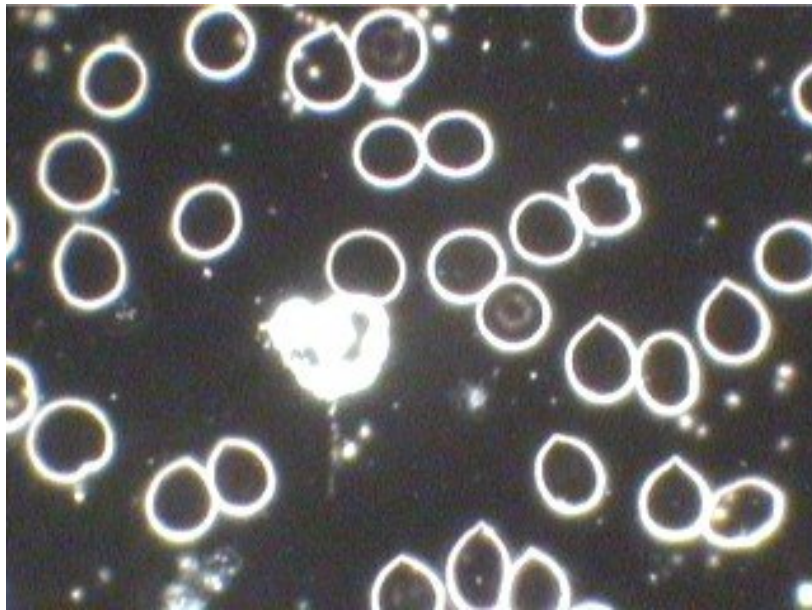
It is not possible to compare the man's age to sensitivity to radio radiation

The examined people were after having fasted every 12 hours and subsequently they made a phone call for 10 minutes with the Wave ex chip.

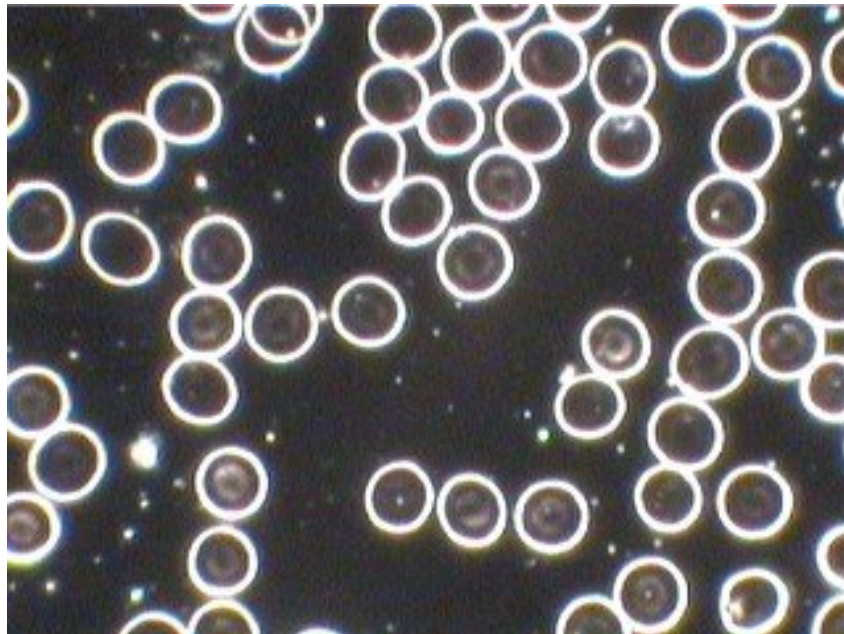
It was proved that blood *only improved* at all examined people to compare with a reference sample, however, despite that it was subject to strong dispersions.

Distinguishing signs and interpretation at blood observation in a dark field

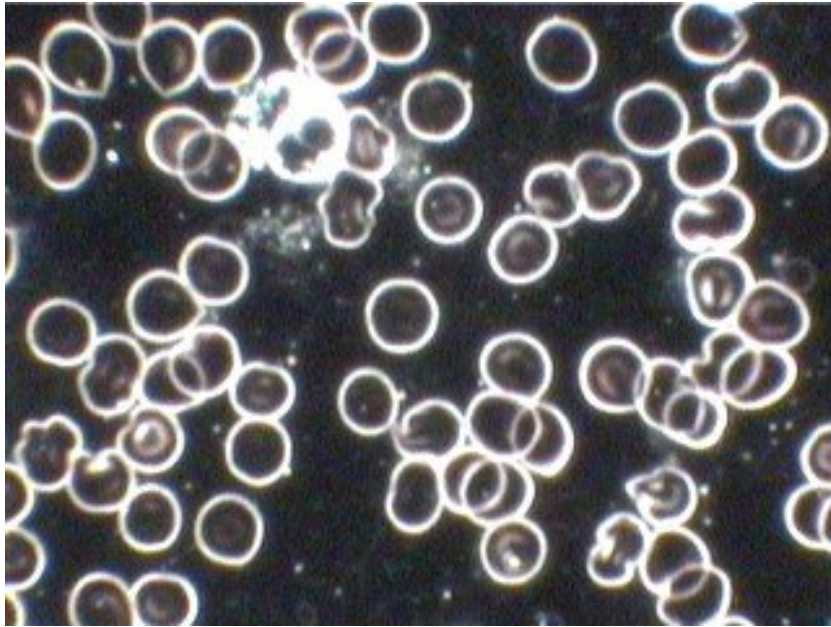
(Note: The patient must be “having fasted” for 12 hours!)



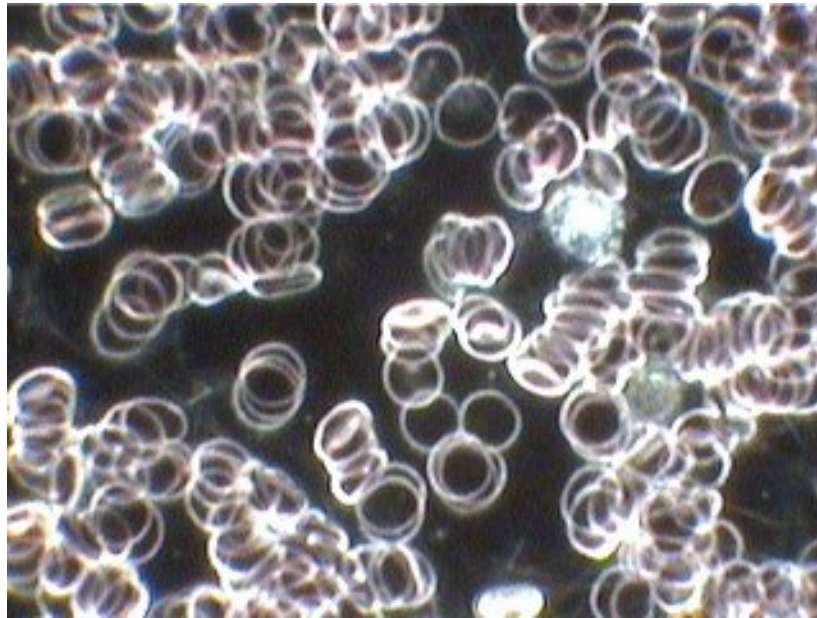
Almost healthy blood: with live energy (lighting circles in erythrocytes), a few lemon shapes (liver defect) and a shape sucked out caused by trichomonas (corrugated) leukocytes active



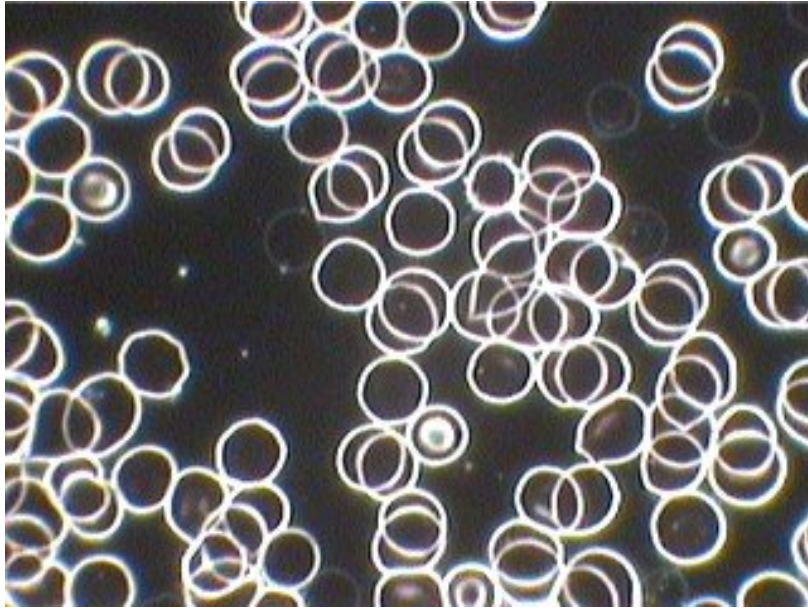
Almost healthy blood: (free round erythrocytes with a lot of live energy)



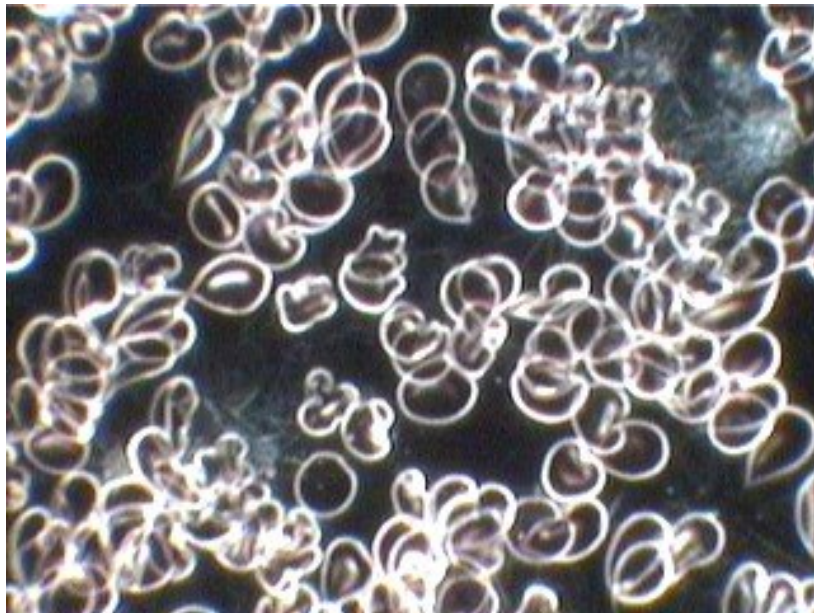
**Slight formation of trombes and deformation erythrocytes
 (sedimentation and round and square shapes, despite that with live energy).
 Healthy leukocytes, (size: approx. 1.5-2-times bigger than erythrocytes) = good stamina
 In serum (black area) big c-candid web, under leukocyte**



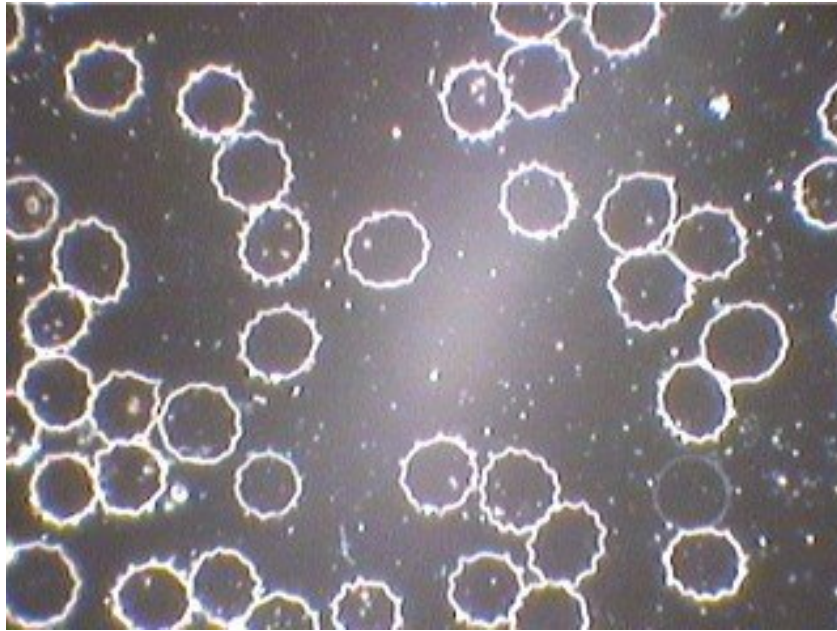
**Strong sedimentation erythrocytes,
 leukocytes actively and well differentiable, a little small
 Serum partially with cobweb fibres (fility) = inner states of distress
 and eventually defects of congestion**



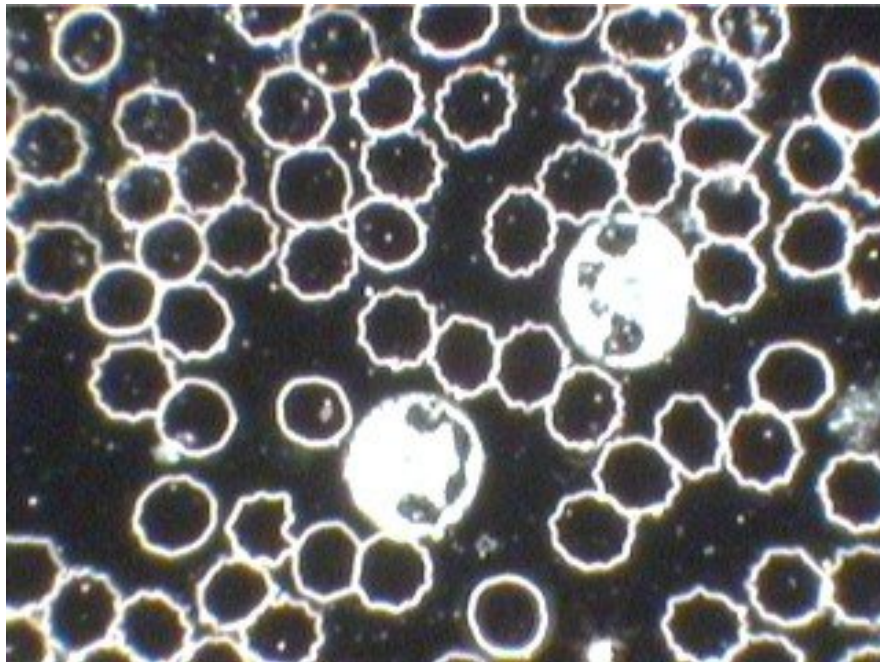
**Sedimentation, slight deformation 1 echinocyte
and a little of live energy at erythrocytes
Clear serum (dark colour)**



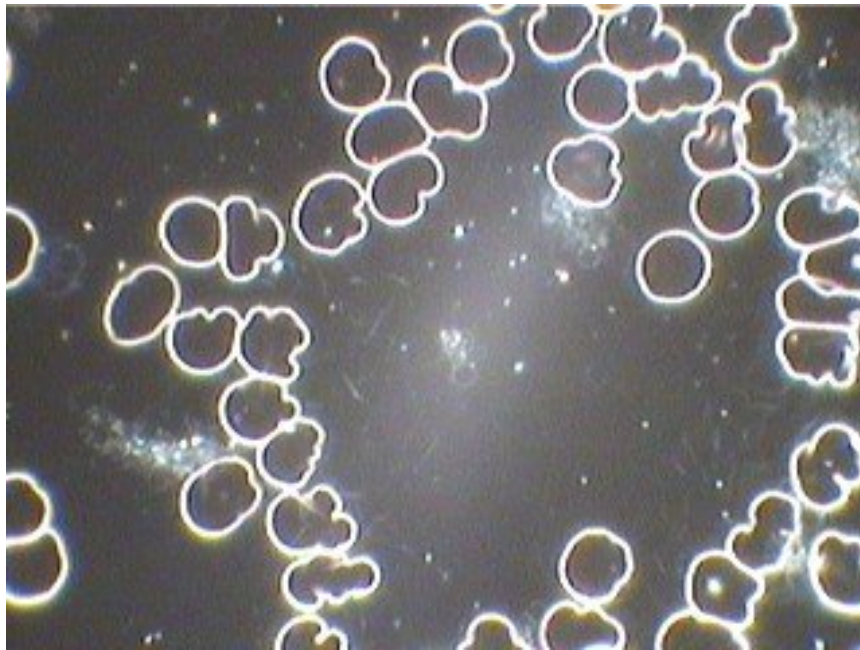
**Erythrocytes are strongly deformed and stuck
The serum shows big sediments of c-candid (white sun formation)**



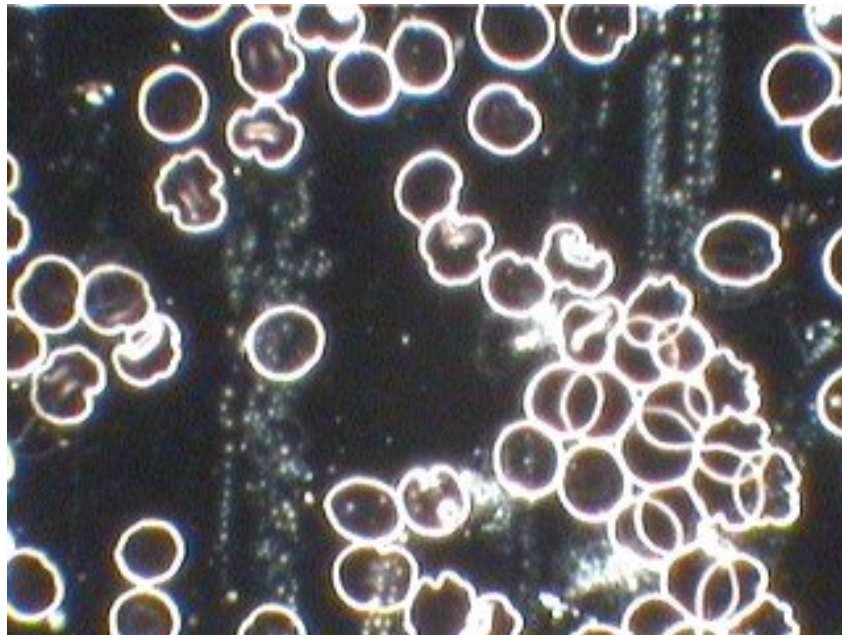
**Erythrocytes in form of echocytes, (insufficient oxygen supply)
The serum reminds star sky**



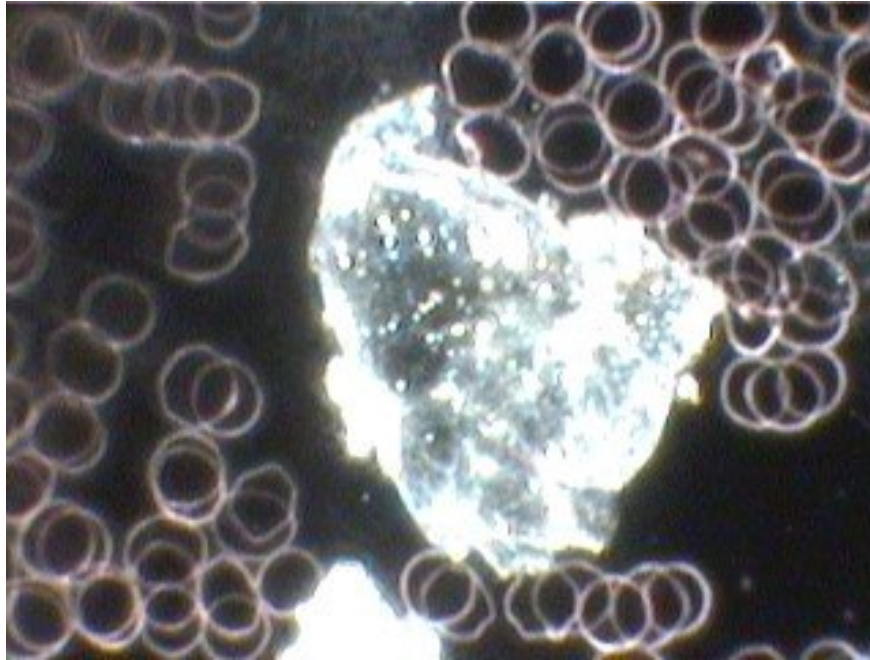
**Erythrocytes, mostly with sharp dents, which are sucked out due to c-trichomonas.
Leukocytes sufficiently big, well differentiable, active.**



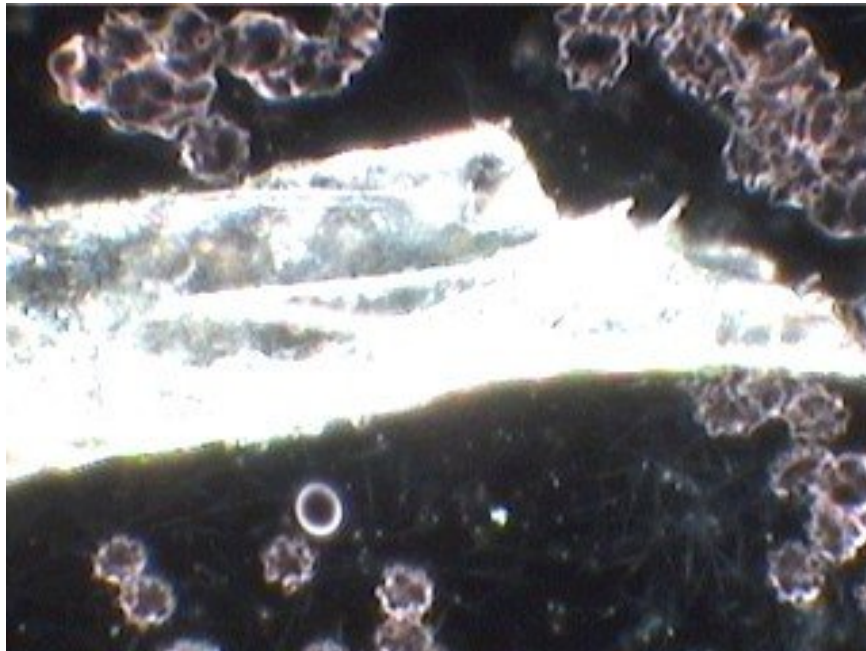
**Erythrocytes: a lot of bear paws, (hidden borreliosis)
The serum: turbid with c-candid and cobweb fibres**



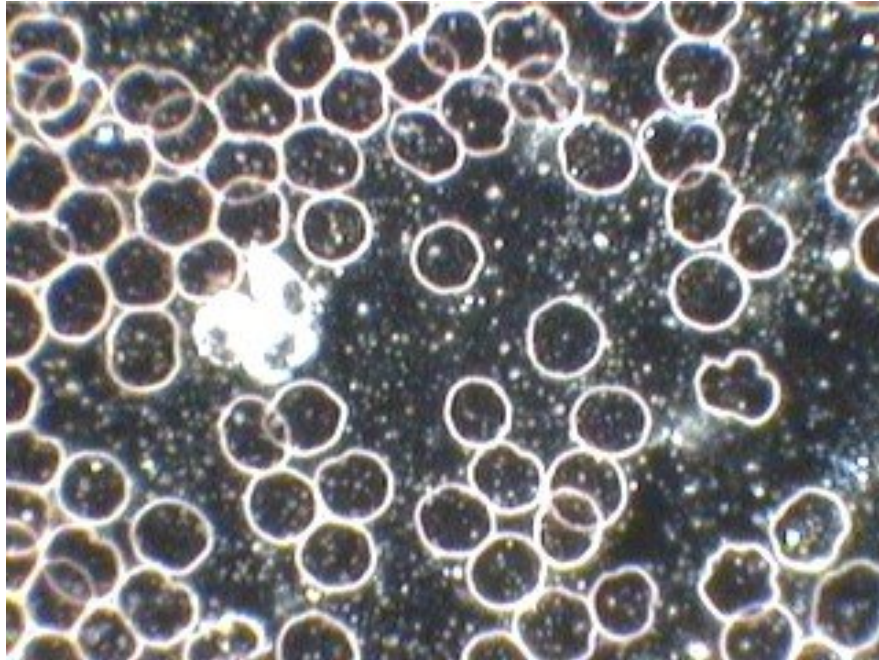
**Erythrocytes: various deformations and clusters (also bear paws)
The serum: Milky way (points arranged in the white stripe)**



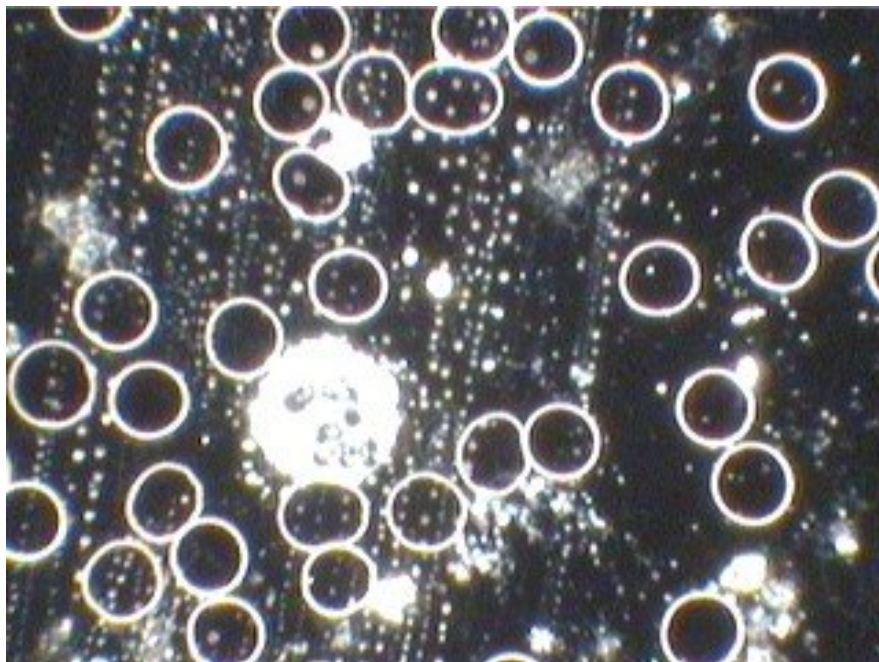
Erythrocytes: Sedimentation
The serum: Symplast (conglomeration of dried proteins which looks like a gemstone).
= inner funging



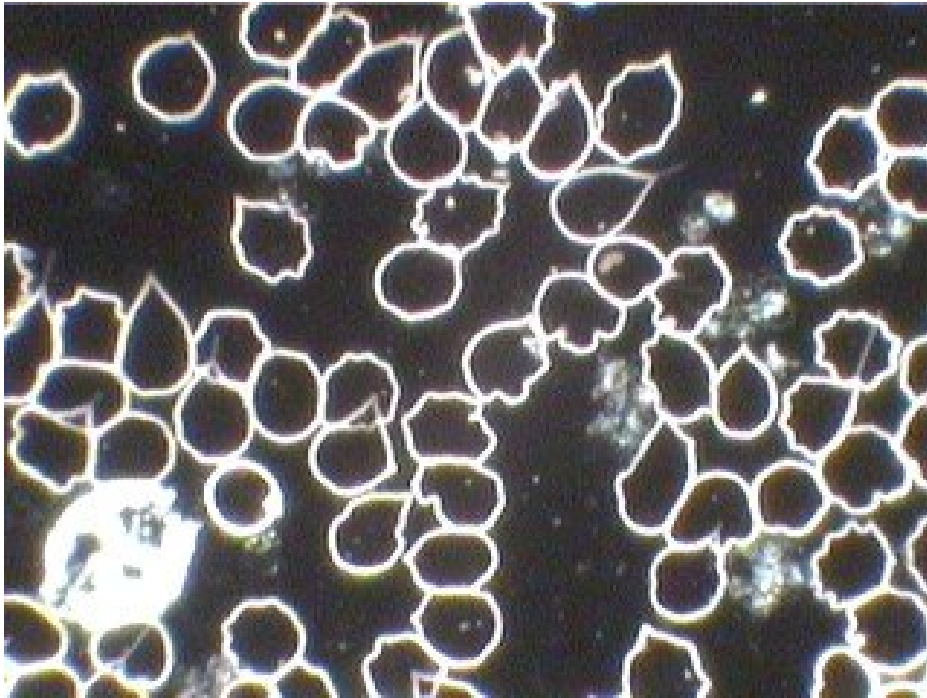
Erythrocytes; corrugated shapes due to c-trichomonas
Serum: pseudo-crystal (red also possible)
= warning on kidneys defects and heavy metals loading



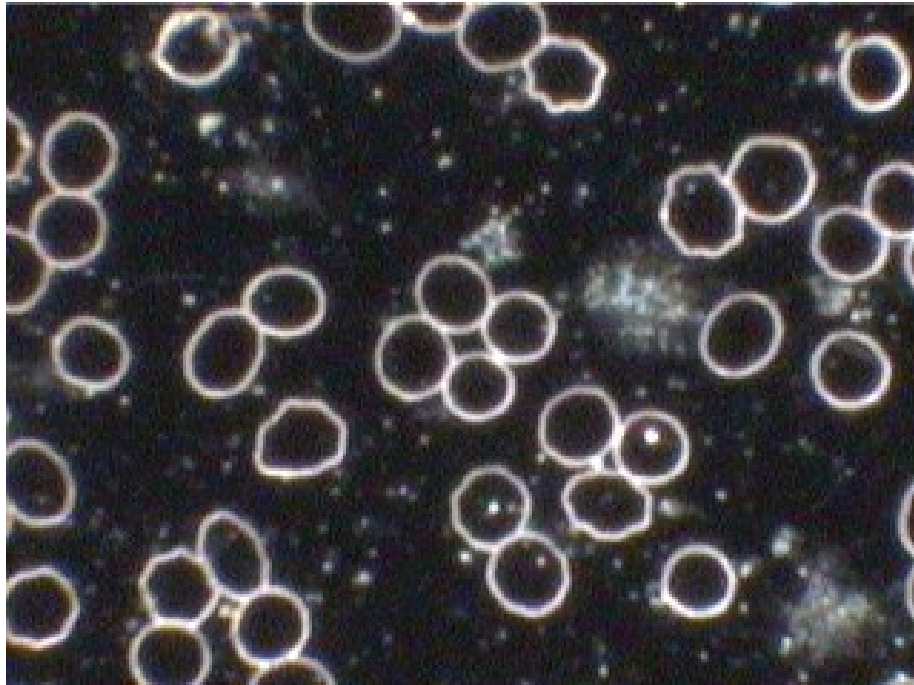
**Erythrocytes slightly deformed, healthy leukocytes.
Serum shows a strong snow storm syndrome (or loss of elasticity)**



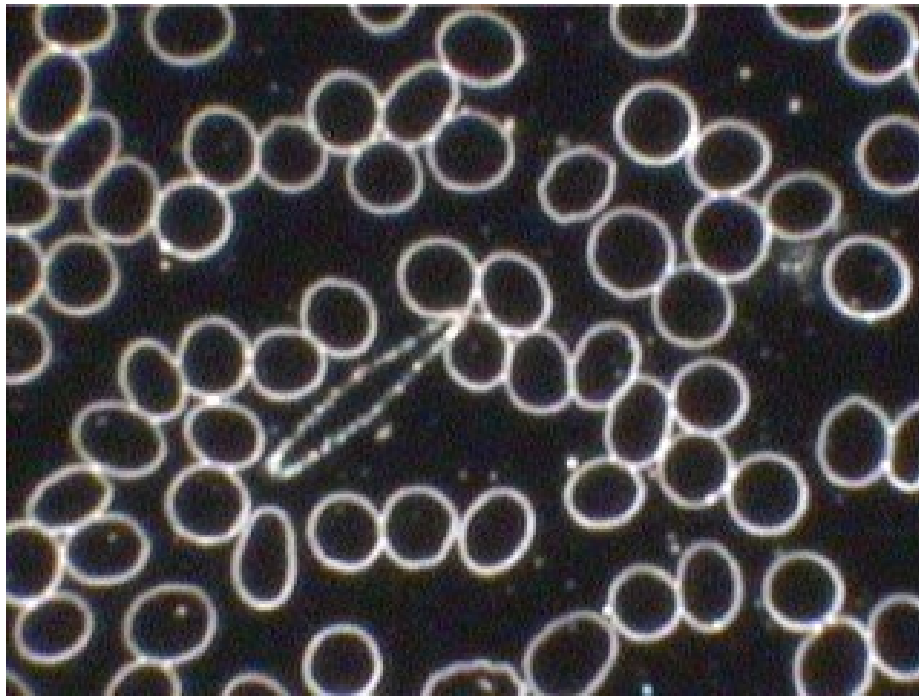
**Erythrocytes: well shaped and nicely round: Leukocytes well differentiable and active
Serum: Milky way and star sky**



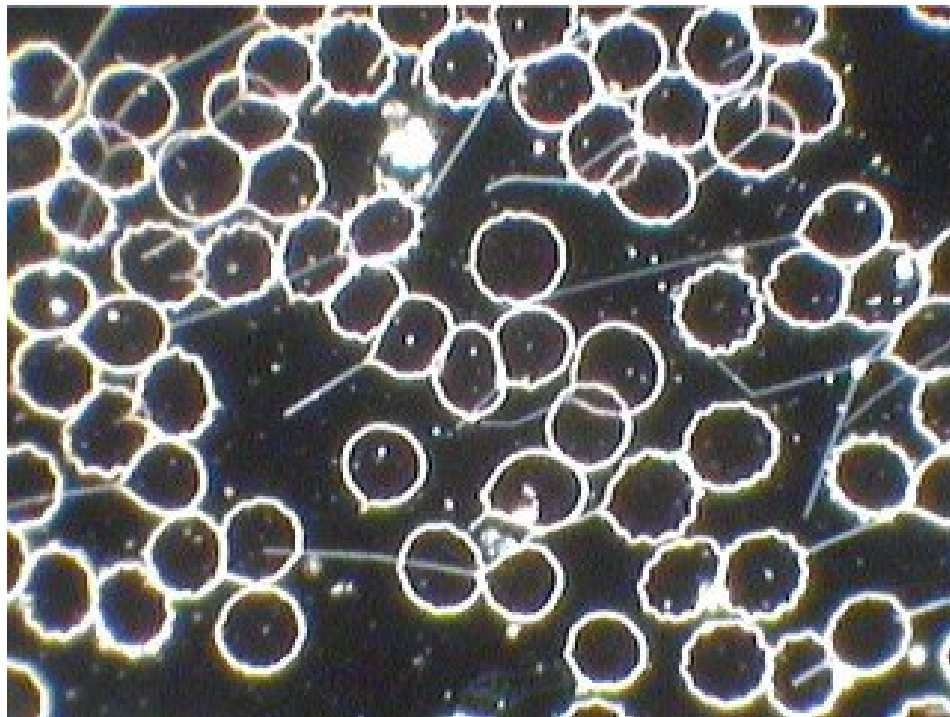
**Sucked out and deformed erythrocytes due to c-trichomonas which camouflage strongly,
Serum with c-candid**



**Erythrocytes: deformed due to c-trichomonas
Serum strongly turbid due to c-candid and star sky**



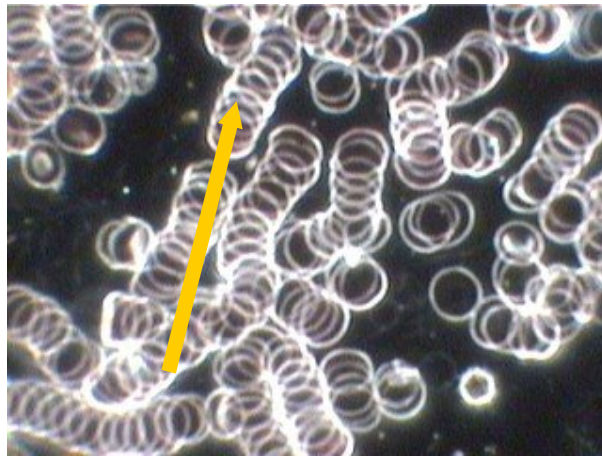
Almost healthy erythrocytes which are pricked by c-trichomonas (spike, needle shape)



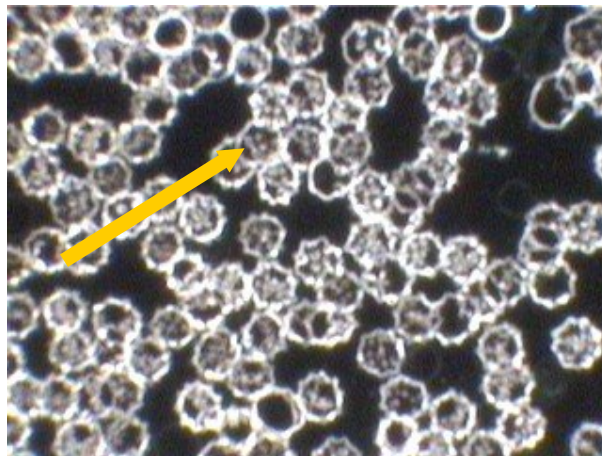
**Erythrocytes sucked by c-trichomonas
Serum shows the germs of c-candid (linear shape, no movement),
or seldom: Morgellons (long, movable, worm-like symbionts probably from leeches and
funguses communicated by a contact infection from dirt).**

**Forms of symptoms in blood which changed when calling
from a mobile telephone:**

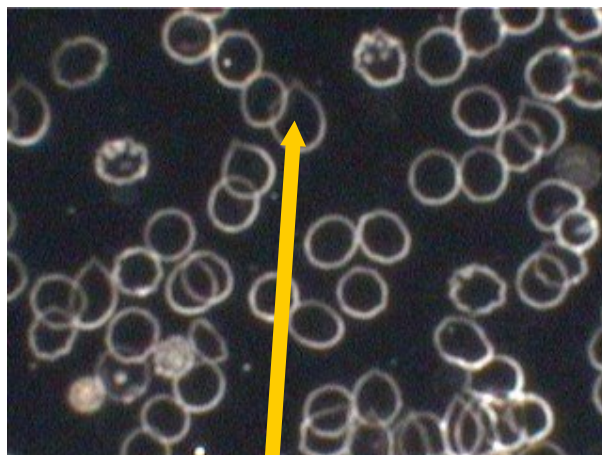
Erythrocytes:



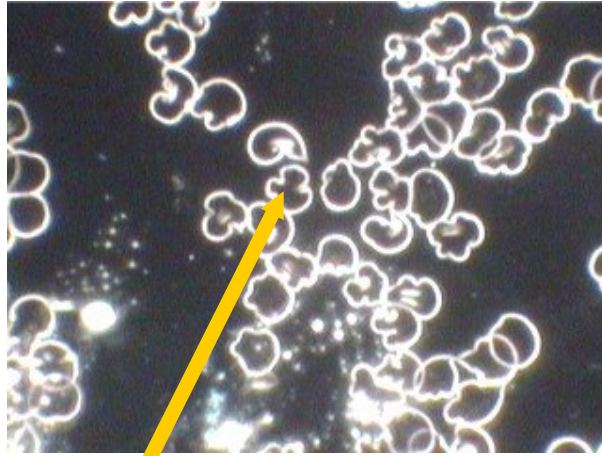
Sedimentation, "rouleaus"



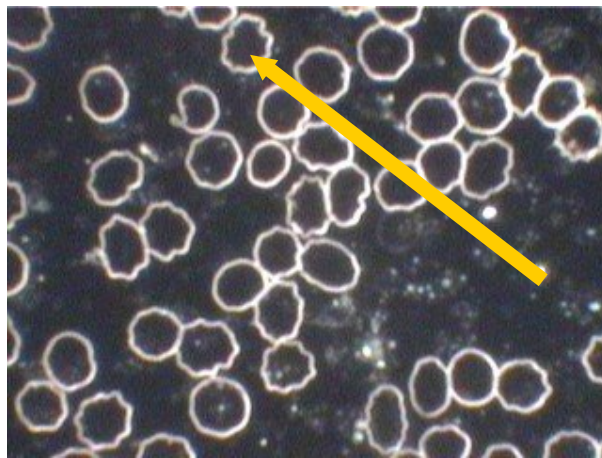
Echinocytes



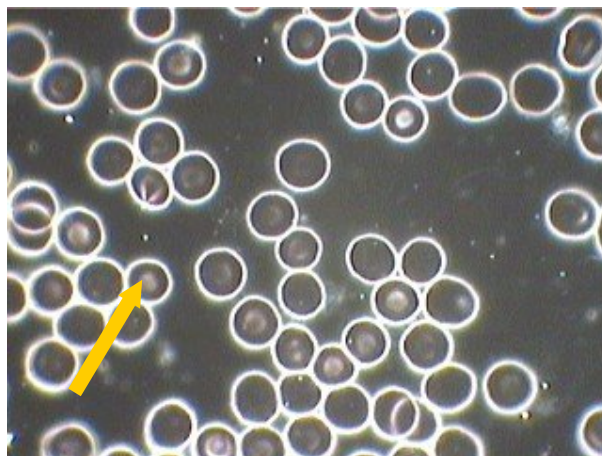
Lemon shapes



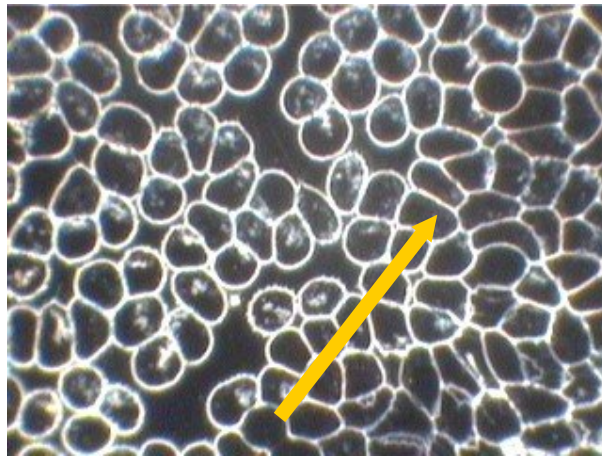
Bear paws



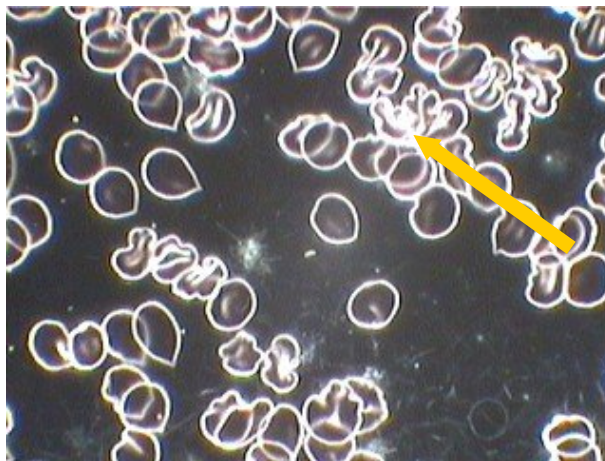
Corrugation caused by c-trichomonas



Live energy

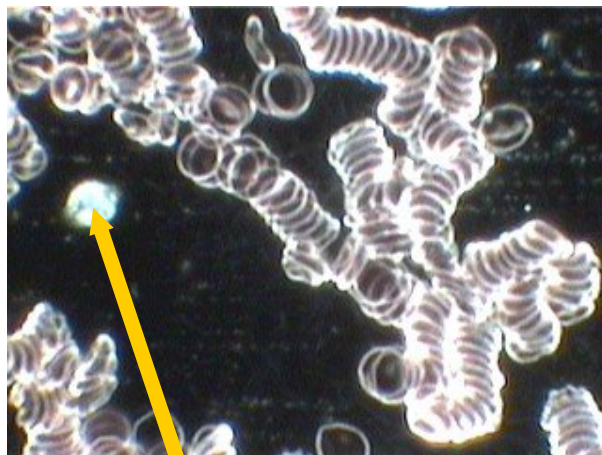


Strong deformation

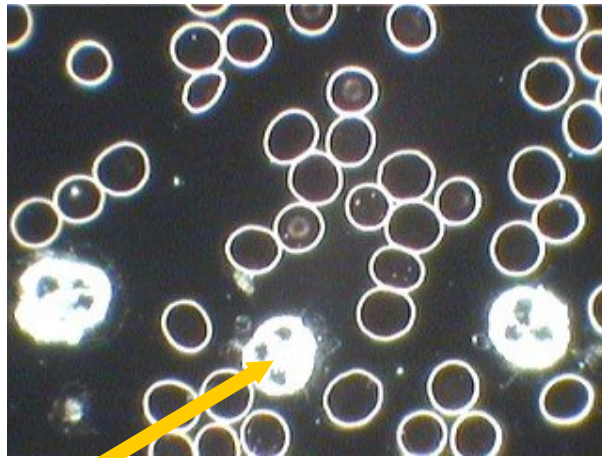


Strongly corrugated, stuck and deformed erythrocytes

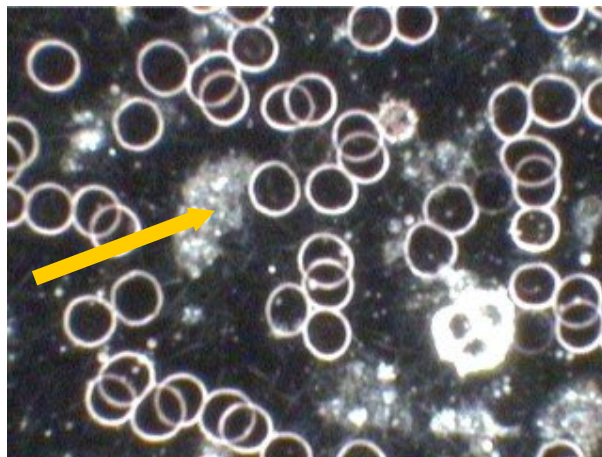
Leukocytes:



too small



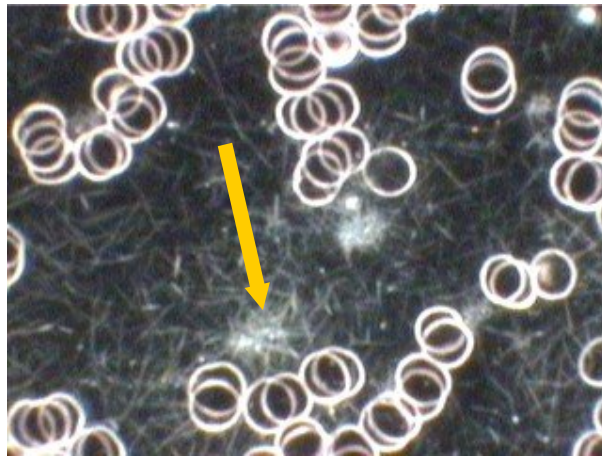
healthy size
In the serum:
(plasma)



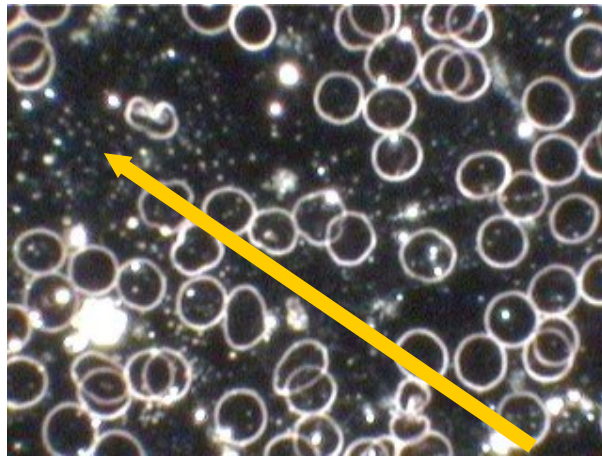
c-candid



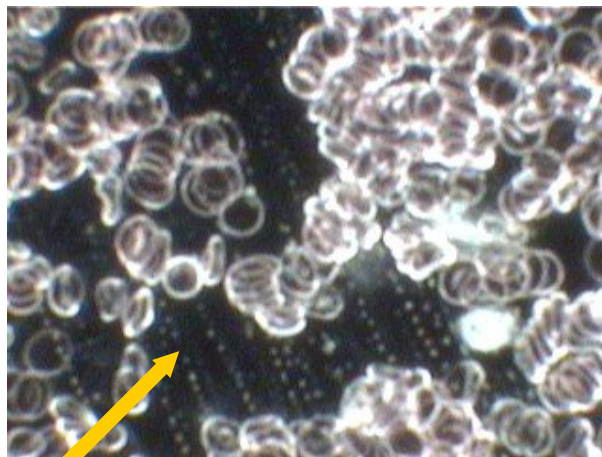
symplasts



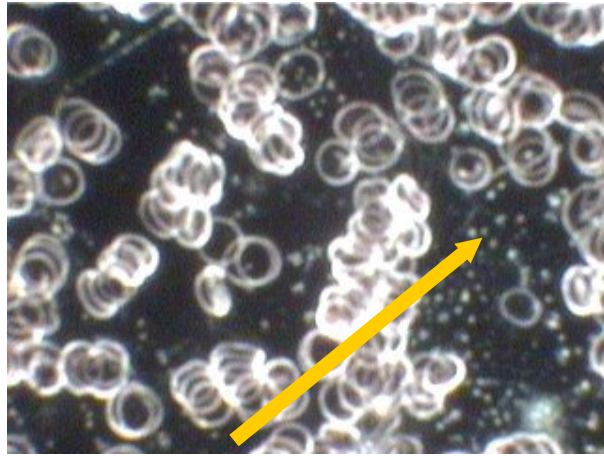
cobwebs



Fibrillation corpuscles (bulking)



Milky way



Star sky

At consistent observation of the symptoms the features which indicate a defect of healthy blood may be found.

At any case it may happen that relatively healthy blood after a phone call from a mobile phone, one or more (depending on the frequency of testing), shows more typical forms as may be seen in the above pictures and thus the therapist obtains incorrect diagnostic information.

However, it can also happen that several typical forms remain similar to unloaded blood of a patient to compare with blood after a phone call from a mobile telephone.

We could take the people who came to us already loaded by initial radiation in advance (which is conditioned by direction antennas close to them, which had caused the initial radiation) into account only to such an extent to which they could be well compared with the changed conditions at our examination.

Final assessment:

The submitted results clearly show that radio radiation, regardless its kind, can affect our organism.

Therefore it cannot be excluded that it may even initiate pathological changes of our cells.

Pathogenic changes seem to be in our blood, which are although not always distinguishable in the same negative symptoms, however, they prove themselves in particular features which has never been recorded and published this way.

In general we cannot state that very frequent use of a mobile telephone causes strong sedimentation.

That is a misjudgement and in fact means only insufficient ability to interpret such processes in blood quickly and often also not clearly.

This statement is very superficial and is mostly disagreed.

It may rather be noticed at blood observation in a dark field that particular factors which are necessary to state a diagnosis bring other pathological features which could lead the therapist to completely incorrect conclusions at assessment.

Since every strange protein component proves in blood differently and can indicate eventual diseases, we can follow the fact at the effect of radio waves that the diseases may be diagnosed which the patient does not have at all.

Therefore dangerous and incorrect diagnosis may occur which will not help the patient.

We are persuaded that the strong over-acidity of German inhabitants (approx. 98 percent according to the statistics) is in many cases the reason of too big and too frequent load by radiation.

Weakening of our body which is given rise this way and thus also destabilisation of our immunity system may lead to any possible diseases.

Our conjectures and statements appear to be confirmed

A few quotations of well-known critics:

° **Already in 1932 it was known that electromagnetic radiation (microwaves and radio radiation) is health harmful and leads to a depressive mood, headaches and nervous states of exhaustion. The studies have proven it clearly since the beginning of the 60s. Despite that this technology has been widely implemented in form of mobile communication networks since 1990.**

German medical weekly paper dated 05/10/1932, Ulrich Weiner, radio technician, AKZ dated 23/02/2008, Chur; CH; www.anti-zensur.info

° **The first mobile communication network in Germany, implemented in 1992, had 800 transmission stations, currently we have 1200 00 from that. That means the increase by 15 000 percent. New and new posts are still being built. We have already approx. 6 percent people sensitive to radiation in Germany today and the tendency is rapidly increasing. If such a trend continues, according to the studies up to 50 percent inhabitants will be allergic to radiation with impacts on their day-to-day life.**

Ulrich Weiner, radio technician, AZK 23/02/2008, Chur, CH; www.anti-zensur.info

° **Shortly after the implementation of the first digital mobile communication network in 1997 in Switzerland psychical diseases, diseases of nerves and sense organs and metabolism defects increased rapidly.**

It is currently officially known that after 10 years of use of mobile telephones we should count with approximately triple increase in malign brain tumours.

Ulrich Weiner, radio technician, AZK 23/02/2008, Chur, CH; www.anti-zensur.info

Gerd Oberfeld, Regional Hygienic Head Office in Salzburg, A: TV program „plus-punkt“

° **Healthy body cells “communicate” mutually through electrical and chemical processes. However, microwaves permanently interfere into this natural communication as disturbers by which they start faulty biological reactions. For example red blood cells transport less oxygen during a call from a mobile telephone. That results in headaches. Since microwave radiation crosses all fixed bodies, forced irradiation which cannot be avoided arises.**

PM 29/10/2008, Wilfried Kühling, President of Scientific Economic Consulting Committee BUND

° Essential loading caused by radiation from a mobile telephone in a body multiply rises because radiation “pulses” in short stokes to be able to transmit a lot of calls at the same frequency at the same time. The effect is approximately as if a man must remain in a “blinking discotheque light”.

Effect: Change of brain currents and central nerve system.

Prof. Ross Adey, University Lorna-Linda, California, USA

The damage caused by mobile communication such as brain tumours, blood changes, cancer, genetic disorders and other physical problems have been proven. At research experiments test-tubes were filled with human blood and radiated by microwaves which are similar to radiation from mobile telephones. The fact that cell cores cleave when affected by ray fields has been proven.

Dr. George Carlo, medical physicist, USA

Other effects of mobile communication: Mobile communication radiation may disorder a hormonal system. It can, for example, disturb the sleep hormone “melatonin” but also strengthen stress hormones release. It results in sleep problems, even depressions, unrest and panic feelings. It has also been proven that mobile communication fields have carcinogenic effect. Cancer develops more quickly and worse than usual due to the fields. After more than 10 years of mobile telephones use the brain cancer risk has increased by 20 to 200 percent.

**Dr. med. Hans Christoph Scheiner, AZK 23/02/2008, Chur, CH www.anti-zensur.info
Bioinitiative Report dated 31/08/2007 „Mobile communication and health, Report SWR Mainz**

Wave Ex Handychip harmonizes health harmful radio radiation at mobile telephoning

We have dealt with the fact whether the counts of a person who called for 10 minutes provided to certain extent identical statements as their reference counts in our research. We could reply negatively to that in most cases.

If a mobile phone is provided with a Wave Ex Handychip by Vital Energy, the blood does not change at a 10-minute telephone call, it may even improve!

If the phone call was made without the Wave Ex chip at first and then with the Wave Ex chip, we could see that almost always the patient's bad blood improved. We do not have clear explanation for this phenomenon; however, we accept it with pleasure.

However, deterioration has not been found at any case. Also in reverse order (a phone call with the Wave Ex chip and then without the Wave Ex chip) only in 2 of 62 cases deterioration of blood was proven. However, also here constitution and general condition of a patient should be taken into account.

To conclude we must say that we are persuaded that this new Wave Ex chip can protect a lot of mobile phone users against harmful radiation.

Moreover, if it is available for a good price, there is nothing in the way of a new era of mobile communication which will not cause diseases.

an illegible signatures

Bernd Bruns

Institute for natural medicine Wiesbaden

In Wiesbaden on 18/05/2011